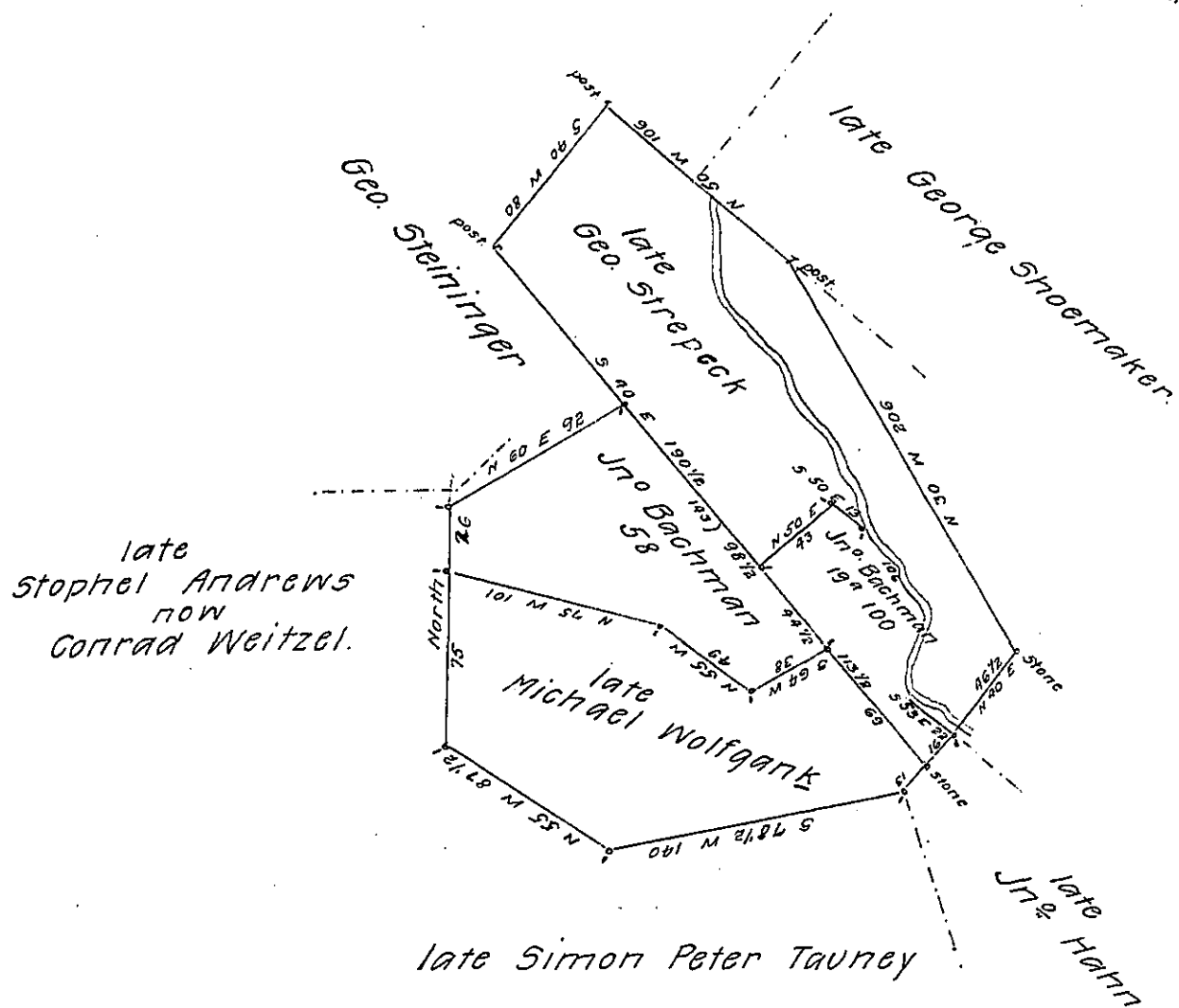


113 1/2
69
44 1/2



A Draught of John Bachman's land situate in Upper Milford Township Northampton County Viz the 1st containing 199 100- is part of 150 Acres 127 P Originally Surveyed to George Stre- peck by warrant of the 8th December 1744 the other tract containing 58 Acres is part of 144 Acres & 67 perches Originally surveyed to Michael Wolfgang by warrant of the 16 Novem- ber 1750 Surveyed the 10 March 1792 at the request of John Bachman.

P- Geo. Palmer

Daniel Brodhead Esquire
Surveyr General.

IN TESTIMONY that the above is a copy of the original remaining on file in the Department of Internal Affairs of Pennsylvania, made conformably to an Act of Assembly approved the 16th day of February 1833, I have hereunto set my hand and caused the Seal of said Department to be affixed at Harrisburg, this eighteenth day of June 1907.

Henry Howell
Secretary of Internal Affairs.